

Rotule pour capteur de Force
Rod end for Force Sensor

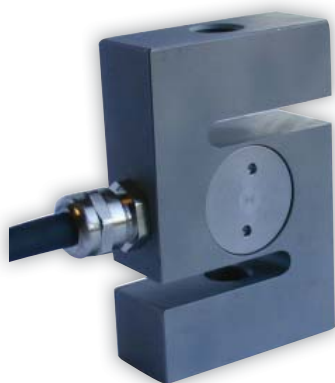
EF & EM

1 N ... 500 KN



- Adaptée à nos capteurs pour une meilleure performance
- Rotule mâle et femelle
- Charge possible jusqu'à 500 KN
- *Adapted for our sensors*
- *Rod end male or female*
- *Load up to 500 KN*

Exemple de capteurs associés - Associated sensors exemples



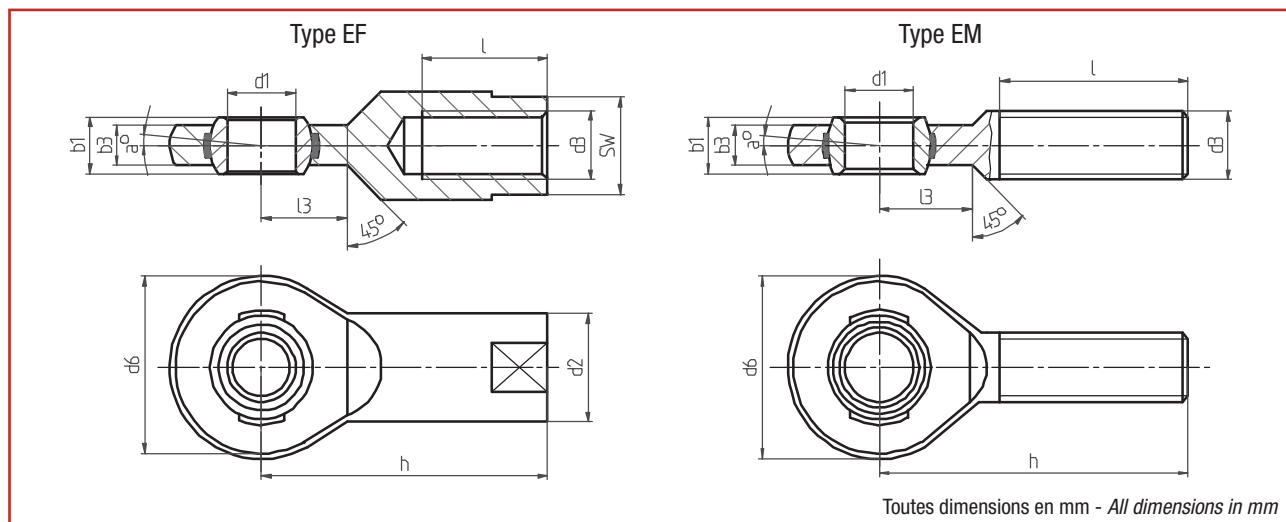
K25



K12



ZFA



EF	b1	b3	d1	d2	d3	d6	h	l	l3	α	SW	Poids Weight (kg)	Charge statique max. Max. static load (N)	Charge dynamique max. Max. dyn. load (N)
EF 5	8 ⁰ ₋₁₂₀	6	5 ⁺² ₋₁₀	11	M5 x 0.8	18	27	10	10	7.5°	9	0.018	10 800	3 910
EF 6	6 ⁰ ₋₁₂₀	4	6 ⁺² ₋₁₀	10	M6 x 1	20	30	12	11	6.5°	9	0.017	10 600	3 920
EF 8	8 ⁰ ₋₁₂₀	5	8 ⁺² ₋₁₀	13	M8 x 1.25	23	36	16	12	8.0°	11	0.031	13 100	6 375
EF 10	9 ⁰ ₋₁₂₀	6	10 ⁺² ₋₁₀	16	M10 x 1.5	28	43	20	13	6.0°	14	0.054	18 800	9 415
EF 12	10 ⁰ ₋₁₂₀	7	12 ⁺³ ₋₁₁	19	M12 x 1.75	32	50	22	15	5.0°	17	0.086	28 000	12 355
EF 17	14 ⁰ ₋₁₂₀	10	17 ⁺³ ₋₁₁	25	M16 x 2	44	67	28	20	5.5°	22	0.210	57 900	24 515
EF 20	16 ⁰ ₋₁₂₀	12	20 ⁺³ ₋₁₁	28	M20 x 1.5	51	77	33	23	4.5°	24	0.290	76 700	34 125
EF 25	20 ⁰ ₋₁₂₀	16	25 ⁺³ ₋₁₃	35	M24 x 2	62	94	42	30	3.5°	30	0.57	119 100	55 700
EF 35	25 ⁰ ₋₁₂₀	20	35 ⁺³ ₋₁₅	48	M36 x 3	82	125	61	38	3.5°	41	1.23	180 800	92 180
EF 45	32 ⁰ ₋₁₂₀	25	45 ⁺³ ₋₁₅	65	M45 x 3	102	165	76	50	4.0°	55	3.085	276 200	147 100
EF 60	44 ⁰ ₋₁₅₀	36	60 ⁺⁴ ₋₁₉	82	M60 x 4	135	225	103	70	3.5°	70	7.300	532 100	282 530

EM	b1	b3	d1	d3	d6	h	l	l3	α	Poids Weight (kg)	Charge statique max. Max. static load (N)	Charge dynamique max. Max. dyn. load (N)
EM 6	6 ⁰ ₋₁₂₀	4	6 ⁺² ₋₁₀	M6 x 0.8	20	36	22	11	6.5°	0.014	6 400	3 920
EM 8	8 ⁰ ₋₁₂₀	5	8 ⁺² ₋₁₀	M8 x 1.25	23	42	25	12	8.0°	0.024	11 000	6 375
EM 10	9 ⁰ ₋₁₂₀	6	10 ⁺² ₋₁₀	M10 x 1.5	28	48	29	13	6.0°	0.041	16 800	9 415
EM 12	10 ⁰ ₋₁₂₀	7	12 ⁺³ ₋₁₁	M12 x 1.75	32	54	33	15	5.0°	0.067	23 000	12 355
EM 17	14 ⁰ ₋₁₂₀	10	17 ⁺³ ₋₁₁	M16 x 2	44	69	40	23	5.5°	0.163	54 100	24 515
EM 20	16 ⁰ ₋₁₂₀	12	20 ⁺³ ₋₁₁	M20 x 1.5	51	78	47	25	4.35°	0.270	76 700	34 125
EM 25	20 ⁰ ₋₁₂₀	16	25 ⁺³ ₋₁₃	M24 x 2	62	94	57	32	3.5°	0.508	119 100	55 700
EM 35	25 ⁰ ₋₁₂₀	20	35 ⁺³ ₋₁₅	M36 x 3	82	140	92	38	3.5°	1.330	180 800	92 180
EM 45	32 ⁰ ₋₁₂₀	25	45 ⁺³ ₋₁₅	M45 x 3	102	165	100	50	4.0°	2.620	276 200	147 100
EM 60	44 ⁰ ₋₁₅₀	36	60 ⁺⁴ ₋₁₉	M60 x 4	135	225	140	70	3.5°	6.400	532 100	282 530



BP501 - F 74105 Annemasse Cedex
Tél. : (+33) 4 50 87 78 64
Fax : (+33) 4 50 87 78 42
E.mail : info@scaime.com



Téléchargez tous
nos documents sur :
Download all
our documents from:
www.scaime.com

Agent